



Scuola Superiore
Sant'Anna

Agroecological Innovations for Resilience and Sustainability of Alpine Livestock Farming Systems: **INVERSION**

Marzia Ranaldo, Paolo Bàrberi & (Stefano Carlesi)
marzia.ranaldo@santannapisa.it



Alpine Livestock Farming Systems Issues (Giudicarie, Trento)



Alpine Livestock Farming Systems Issues (Giudicarie, Trento)

- Intensification of dairy farming
 - Higher external input (concentrate feed)
 - Livestock increased in number
 - Reducing number of little farm (profitability)

- Monoculture instead of pasture
- Land abandonment

- Low economic suitability
- Reduction of animal welfare
- Environmental risk due to a high level of slurry production

Loosing
Linkage to territory:
identity

Higher concentrate
costs
Lower milk price



Farmers from a valley (Trento) from different municipality

Bottom up willingness of change (even too much 😊)



A gradient of Farms

Agrilife
Athabaska
Maso Pisoni

Fornas de Curè
Marchetti
Cargos



Diversified farming



A gradient of Farms

Agrilife

Athabaska

Maso Pisoni

Fornas de Curè

Marchetti

Cargos



Intensive dairy
farming



Participatory approach

Innovation broker is a farm (responsible for the coordination)

- 6 farms
- 1 Museum-association (Eco museo delle dolomiti del Garda)
- 1 Veterinary- technician



•2 Research institutions: University (Sant'Anna School- Pisa), (CNR – biometeorology)



Participatory approach

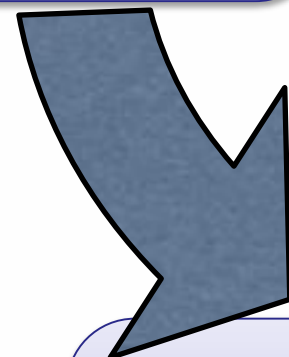


INVERSION objectives

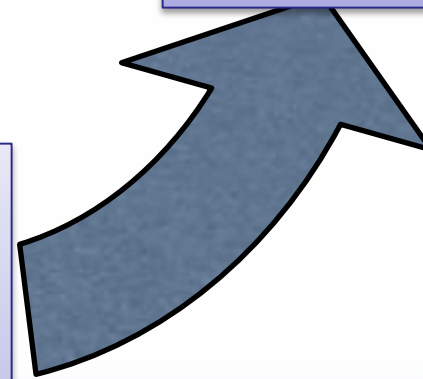
Common priority
needs and target
services



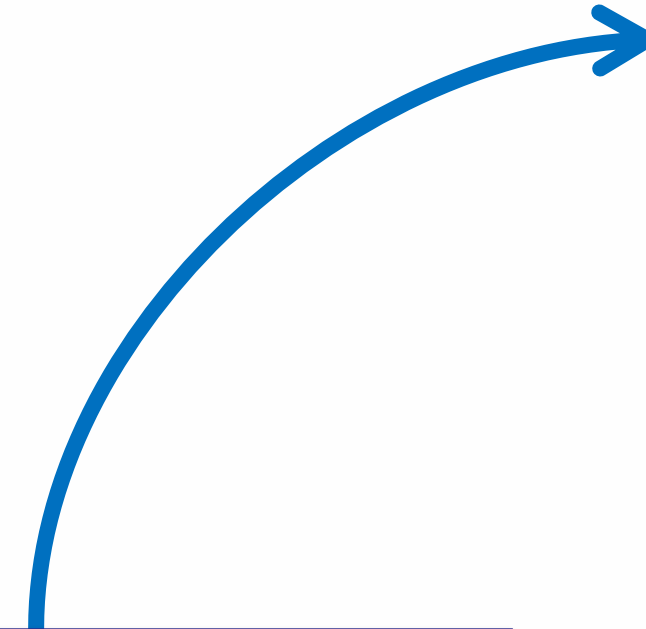
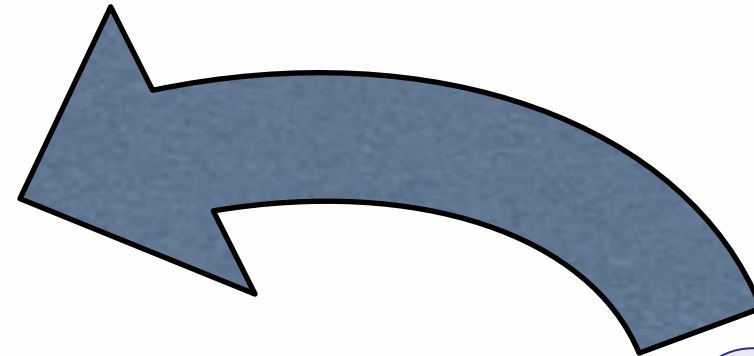
Co-definition of
agroecological
practices



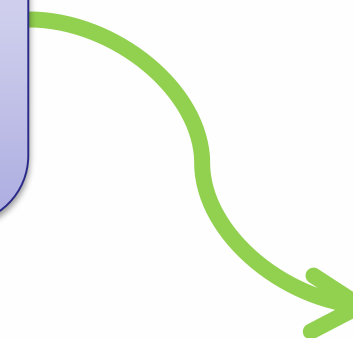
Co-definition of
indicators



Co-evaluation and
adaptive adjustment
of practices



Adoption of tailored
and successful agro-
ecological practices

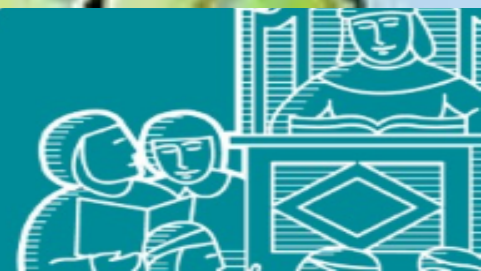


Dissemination of
information and
scientific results



Arising conflict

- Generational conflict inside farm (no conflict between actor involved)
- Main conflict between (concentrate) **feed dealer** and **Academic agroecologist**



Questions for discussion:

How to increase awareness of agroecological practices that can increase economic, social and environmental sustainability of farms?

What can be done to get close to farmers who need guidance in agroecological transition?

- How to reach them?
- How to help them?

